

ASX Release

LITHIUM EXPLORATION UPDATE

21st December 2017

LITHIUM EXPLORATION UPDATE

Lithium exploration along the Dorchap Dyke Swarm during November and December has been focused on the northern end of the swarm near Eskdale in north east Victoria. As previously reported, spodumene has been identified in the LCT pegmatites along the northern portion of the swarm and remains the initial focus for detailed exploration.

Mapping carried out by the Geological Survey of Victoria (GSV) in the late 1800's has already identified a number of larger pegmatite dykes, these have been shortlisted and are now being systematically mapped and sampled. Access to the field area is now ideal following the late winter rains in the north east and has accelerated progress in the field.

Some of the larger dykes shortlisted for reconnaissance mapping and sampling have been located and samples submitted for analysis. Assay results and field mapping interpretation are anticipated early in the New Year. To further accelerate this initial phase of exploration, a helicopter reconnaissance survey is planned to support a rapid assessment of the historic mapping and to identify any additional large, unmapped dykes along the swarm that also require field mapping. The helicopter survey and the employment of additional field staff are planned for early in the New Year.

The aim of the reconnaissance survey is to quickly identify and sample only the larger pegmatites along the northern end of the Dorchap Dyke Swarm. The exploration potential of these key dykes will allow a prospect to be ranked and planning made for first pass drill testing. The very large number of individual dykes that exist within the district means a very targeted approach to exploration is required. Initial targeting of the larger dykes ensures only the best targets are scheduled for early drill testing while additional dyke targets continue to be assessed.

TENEMENT STATUS UPDATE

In December the company had an option to renew the Cudgewa EL5058. Following a review of the past exploration results it was decided not to renew the license to allow the company to focus attention and exploration expenditure across its other quality tenements.

As previously reported, Dart have prepared and submitted two Retention License (RL) Applications in the name of Unicorn Holdings Pty Ltd to secure the Fairleys Gold Project and the Unicorn Porphyry Project within application areas RL006615 and RL006616 respectively (Table 1 – Figure 1). Dart Mining also submitted an application for a larger Mining License (MIN006619) to replace the surrendered Mountain View Mining License MIN5559 (Table 1 – Figure 1).

Application EL006486 (Mt Creek) covering a section of the Dorchap Dyke Swarm remains subject to the ongoing approvals process.



ASX Code: DTM

Key Prospects / Commodities:

GOLD

Mountain View / New Discovery - Au

Fairleys - Au

Rushworth – Phoenix - Au

Onslow – Au

LITHIUM / TIN / TANTALUM

Empress – Li-Sn-Ta

Eskdale / Mitta – Li-Sn-Ta

PORPHYRY GOLD / COPPER / MOLYBDENUM

Empress – Au-Cu

Stacey's – Au-Cu

Copper Quarry: Cu+/- Au

Gentle Annie: Cu

Morgan Porphyry: Mo-Ag-Au

Unicorn Porphyry: Mo-Cu-Ag

Investment Data:

Shares on issue: 635,400,646

Unlisted options: 206,892,632

Substantial Shareholders:

Top 20 Holdings: 39.81%

Board & Management:

Managing Director: James Chirside

Non-Executive Director: Luke Robinson

Non-Executive Director: Russell Simpson

Company Secretary: Julie Edwards

Dart Mining NL

ACN 119 904 880

Contact Details:

4 Bryant Street, Corryong VIC 3707 Australia

James Chirside

Phone: +61 (0)419 605 842

Email: jchirside@dartmining.com.au

Visit our webpage: www.dartmining.com.au

Table 1. Tenement Status

Tenement Number	Name	Tenement Type	Area (Grats) Unless specified	Interest	Location
RL006615	Fairleys ²	RL (Application)	~340 Ha	100%	NE Victoria
RL006616	Unicorn ^{1&2}	RL (Application)	~23,243 Ha	100%	NE Victoria
EL5194	Mt. Alfred	Exploration	27	100%	NE Victoria
EL006277	Empress	Exploration	221	100%	NE Victoria
EL006300	Eskdale ³	Exploration	245	100%	NE Victoria
EL006486	Mt Creek	EL (Application)	~191	100%	NE Victoria
EL5468	Upper Murray	Exploration	148	100%	NE Victoria
EL5315	Mitta Mitta ⁴	Exploration	195	100%	NE Victoria
MIN006619	Mt View ²	Mining (Application)	224 Ha	100%	NE Victoria
MIN5246	Chinaman's ⁴	Mining	5 Ha	100%	Central Victoria
MIN5306	Phoenix ⁴	Mining	5 Ha	100%	Central Victoria
MIN5538	Rushworth ⁴	Mining	34.8 Ha	100%	Central Victoria

All tenements remain in good standing at 1 December 2017.

NOTE 1: Unicorn Project area subject to a 2% NSR Royalty agreement with (Osisko Gold Royalties Ltd) dated 29 April 2013.

NOTE 2: Areas subject to a 1.5% Founders NSR Royalty Agreement.

NOTE 3: Areas subject to a 1.0% NSR Royalty Agreement with Minvest Corporation Pty Ltd (See DTM ASX Release 1 June 2016).

NOTE 4: Areas are subject to a 0.75% Net Smelter Royalty on gold production, payable to Bruce William McLennan

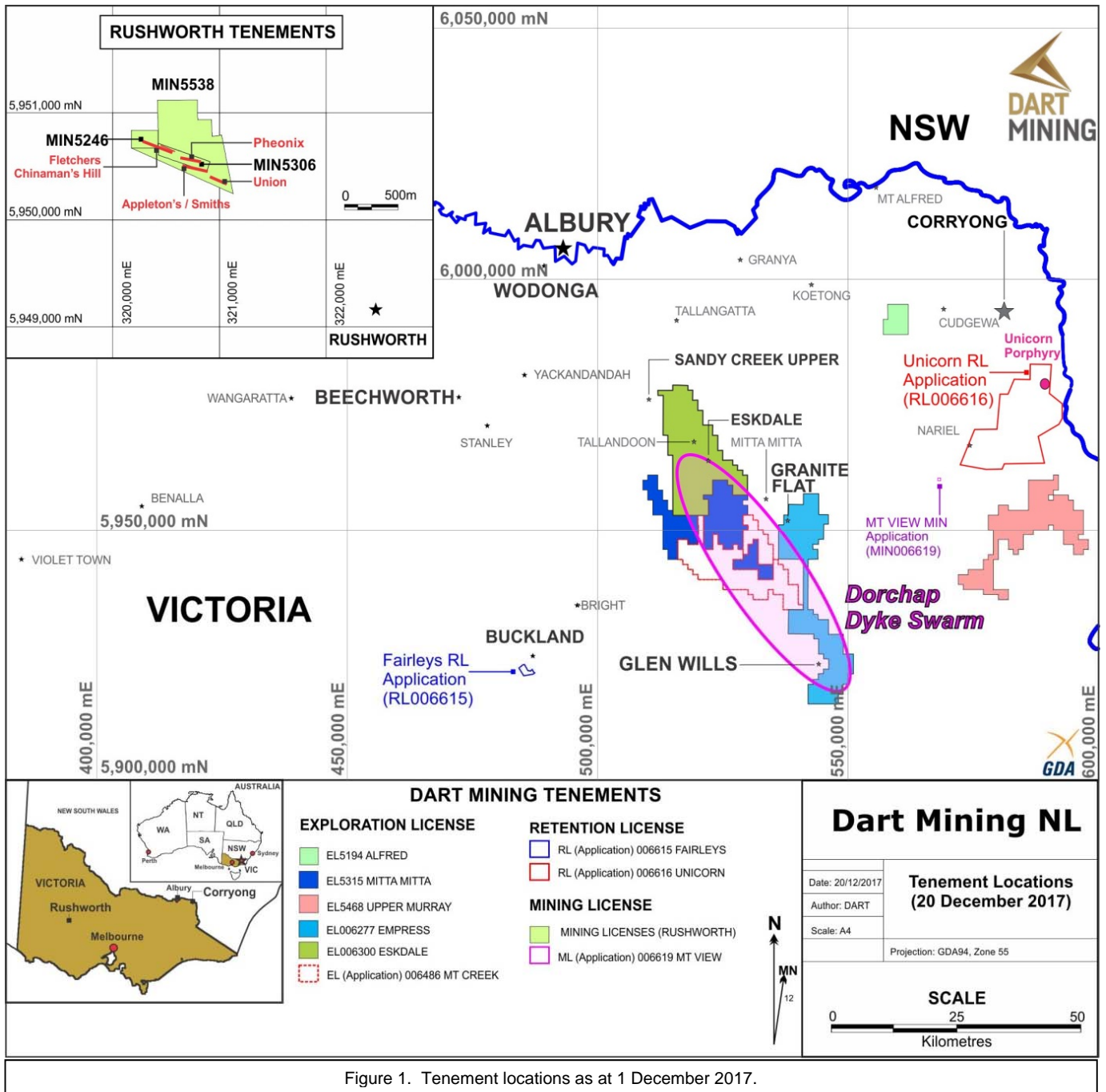


Figure 1. Tenement locations as at 1 December 2017.